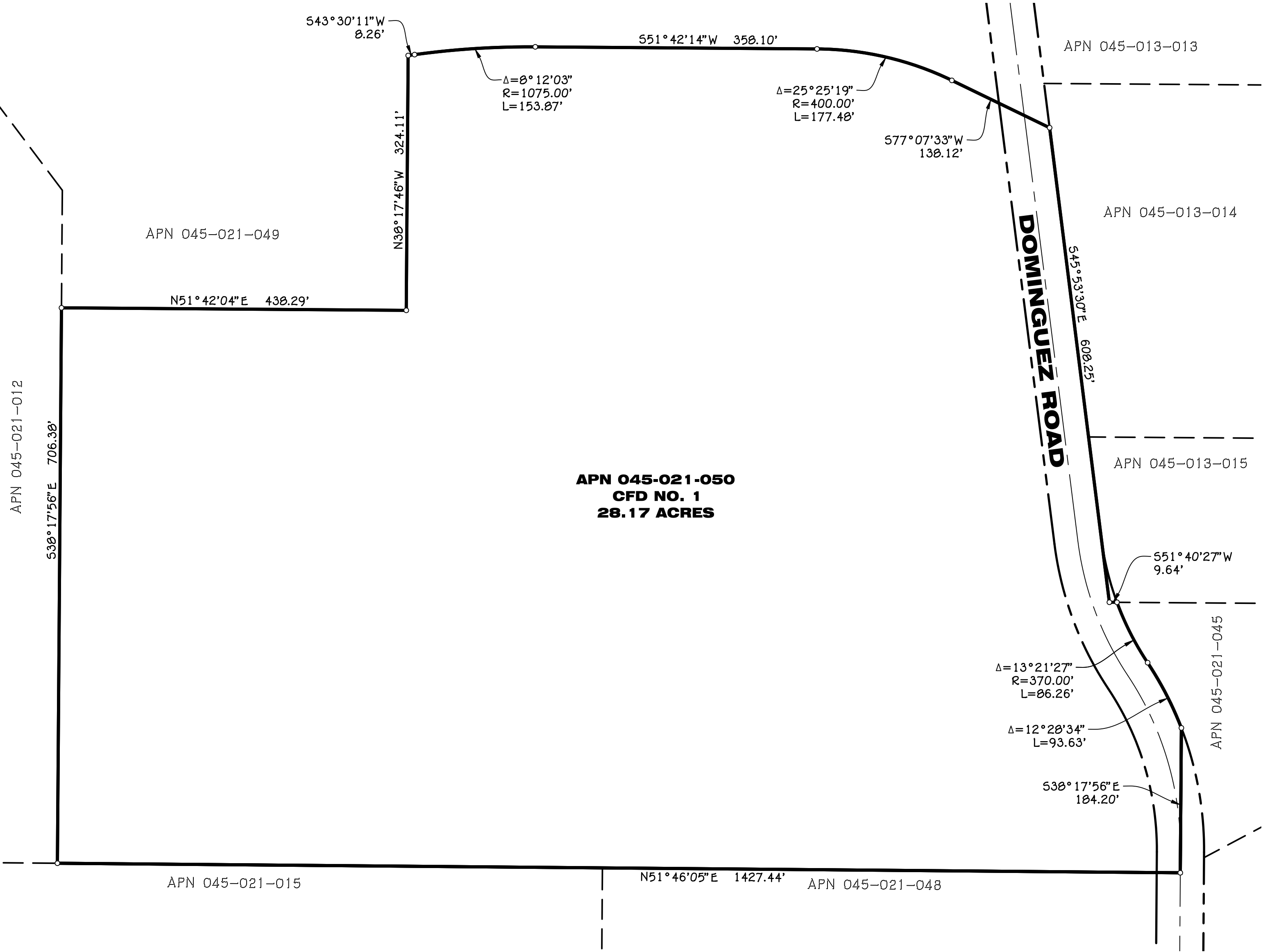
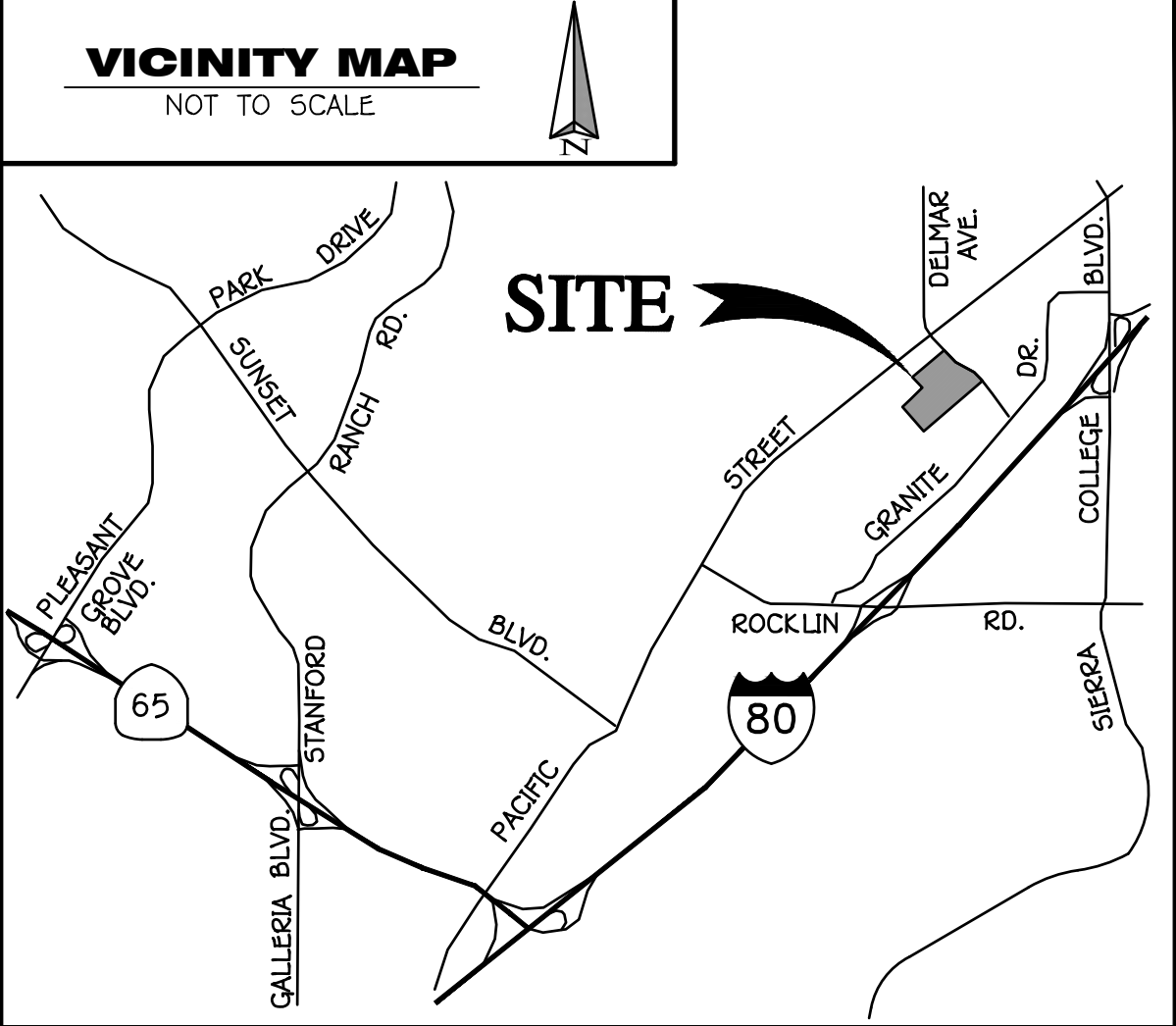
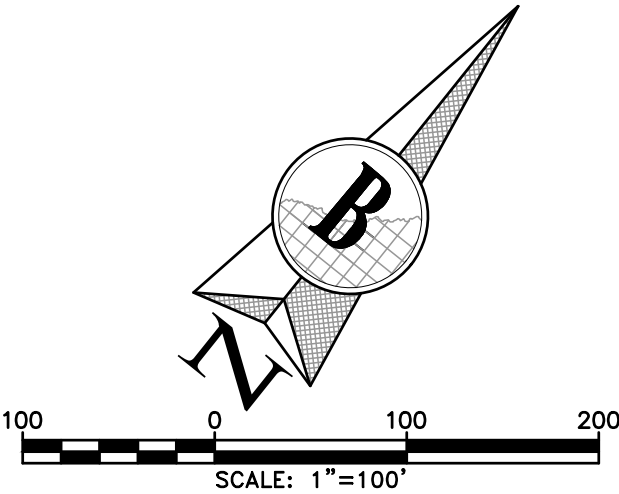


**ANNEXATION MAP NO. 71 OF
COMMUNITY FACILITIES DISTRICT NO. 1**
CITY OF ROCKLIN, COUNTY OF PLACER, STATE OF CALIFORNIA
SIERRA PINE SUBDIVISION (SD2016-0005)



CITY CLERK'S STATEMENT

FILED IN THE OFFICE OF THE CITY CLERK OF THE CITY OF ROCKLIN, COUNTY OF PLACER, STATE OF CALIFORNIA, THIS _____ DAY OF _____, 2019.

MONA FORSTER
CITY CLERK OF THE CITY OF ROCKLIN

CITY COUNCIL'S STATEMENT

I HEREBY CERTIFY THAT THE WITHIN MAP SHOWING PROPOSED BOUNDARIES OF ANNEXATION NO. 71 TO COMMUNITY FACILITIES DISTRICT NO. 1, CITY OF ROCKLIN, COUNTY OF PLACER, STATE OF CALIFORNIA, WAS APPROVED BY THE CITY COUNCIL OF THE CITY OF ROCKLIN, AT A REGULAR MEETING THEREOF, HELD ON THE _____ DAY OF _____, 2019, BY ITS RESOLUTION NO. _____.

MONA FORSTER
CITY CLERK OF THE CITY OF ROCKLIN

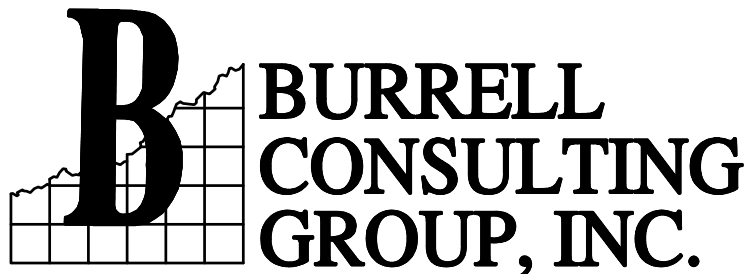
COUNTY RECORDER'S STATEMENT

FILED THIS _____ DAY OF _____, 2019, AT THE HOUR OF _____ .M., FILE NO. _____ IN BOOK _____ OF MAPS OF ASSESSMENT AND COMMUNITY FACILITIES DISTRICTS, AT PAGE _____, IN THE OFFICE OF THE COUNTY RECORDER OF THE COUNTY OF PLACER, STATE OF CALIFORNIA.

COUNTY RECORDER OF COUNTY OF PLACER BY: _____
DEPUTY

NOTE

REFERENCE IS HEREBY MADE TO THAT CERTAIN MAP ENTITLED "PROPOSED BOUNDARIES OF COMMUNITY FACILITIES DISTRICT NO. 1, CITY OF ROCKLIN, COUNTY OF PLACER, STATE OF CALIFORNIA," FILED THE 3RD DAY OF APRIL, 1987 AT THE HOUR OF 9:12 A.M. IN BOOK 1 OF MAPS OF THE ASSESSMENT AND COMMUNITY FACILITIES DISTRICT AT PAGE 2, IN THE OFFICE OF THE COUNTY RECORDER OF THE COUNTY OF PLACER, STATE OF CALIFORNIA, WHICH THIS ANNEXATION MAP AFFECTS.



1001 Enterprise Way, Suite 100 Roseville, CA 95678 (916) 783-8898