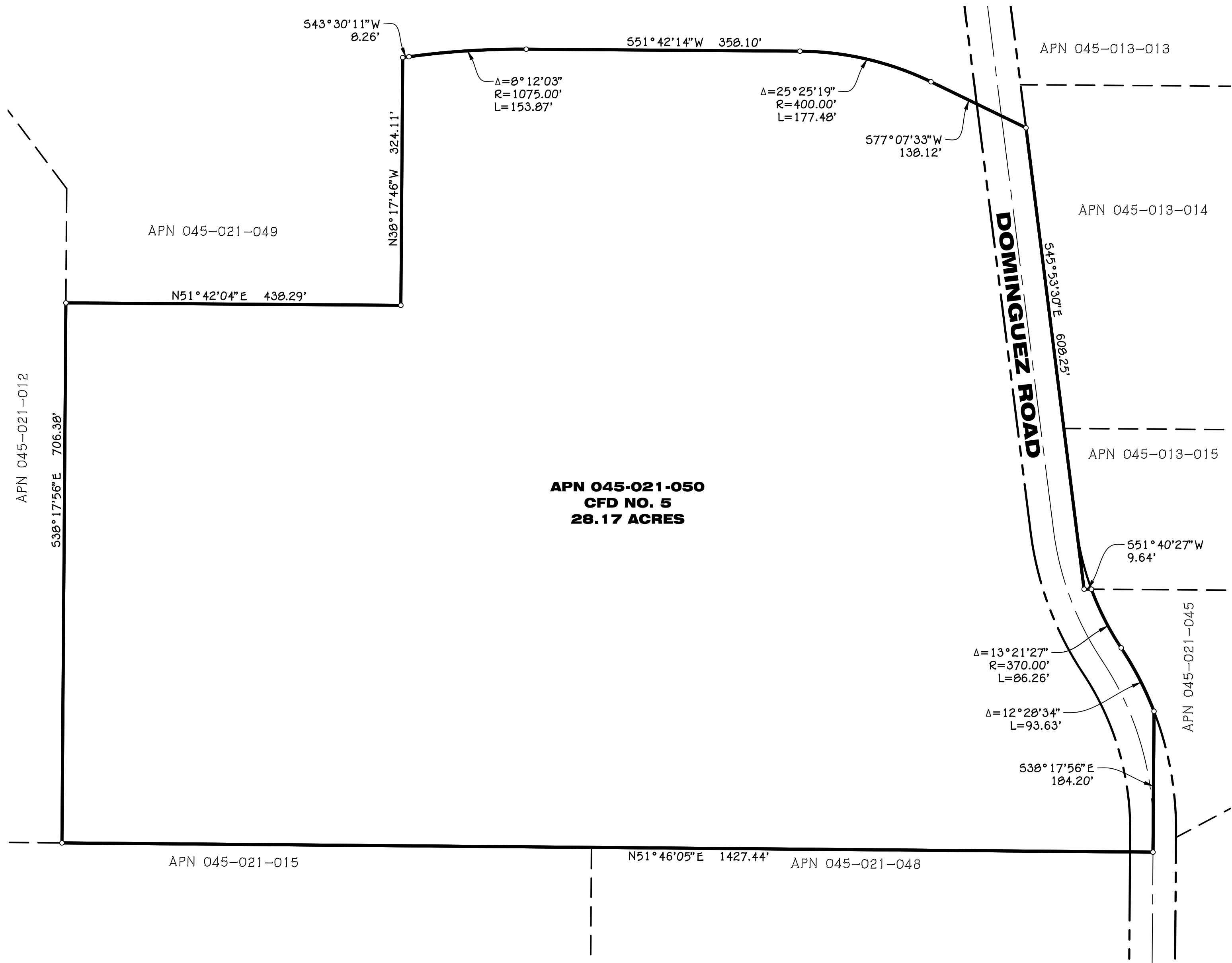
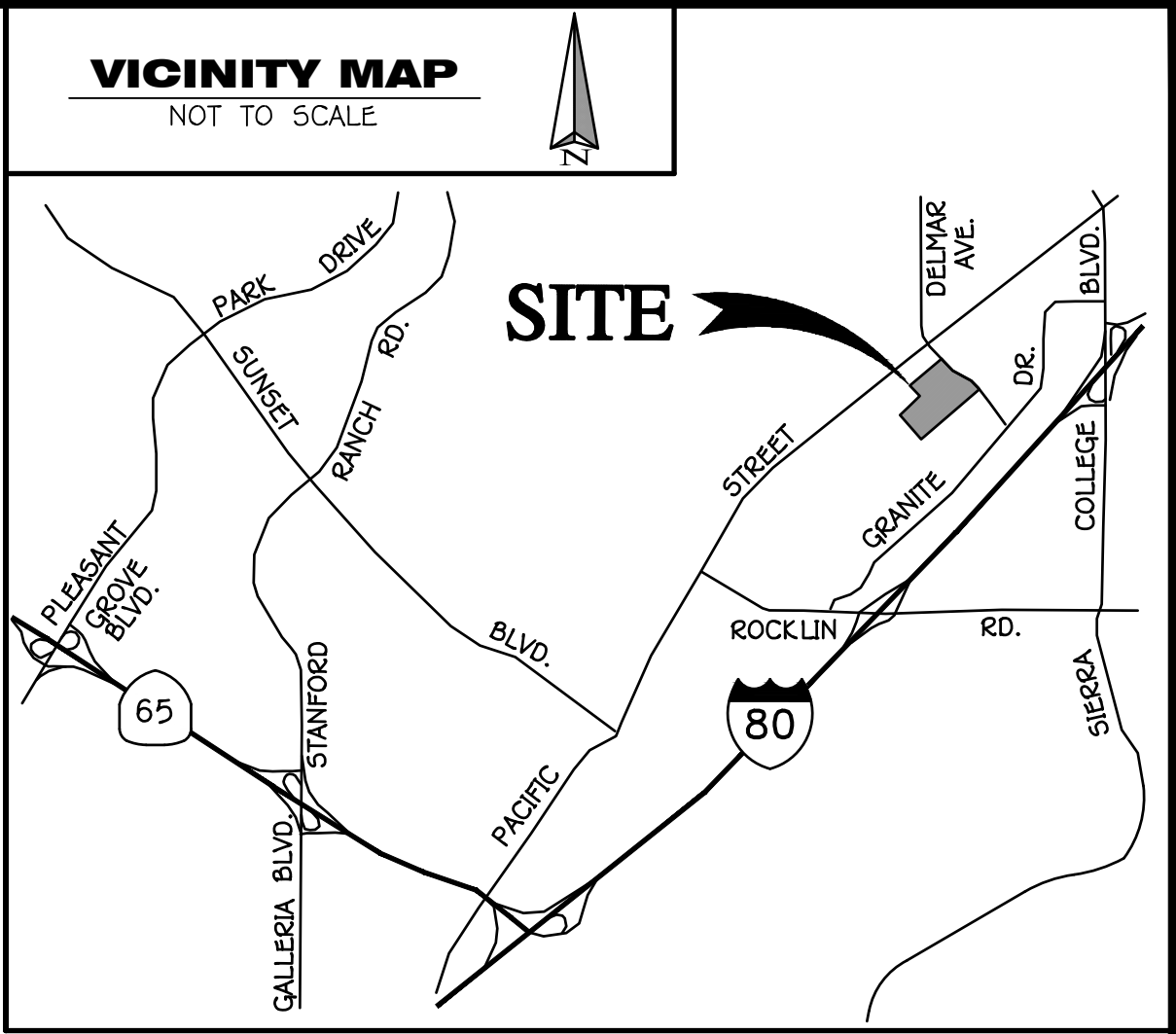
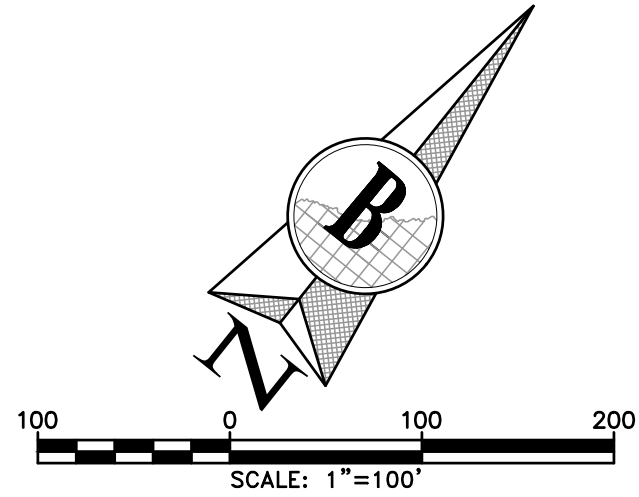


**ANNEXATION MAP NO. 59 OF  
COMMUNITY FACILITIES DISTRICT NO. 5**  
CITY OF ROCKLIN, COUNTY OF PLACER, STATE OF CALIFORNIA  
SIERRA PINE SUBDIVISION ( SD2016-0005 )



**CITY CLERK'S STATEMENT**

FILED IN THE OFFICE OF THE CITY CLERK OF THE CITY OF ROCKLIN, COUNTY OF PLACER, STATE OF CALIFORNIA, THIS \_\_\_\_ DAY OF \_\_\_\_\_, 2019.

\_\_\_\_\_  
MONA FORSTER  
CITY CLERK OF THE CITY OF ROCKLIN

**CITY COUNCIL'S STATEMENT**

I HEREBY CERTIFY THAT THE WITHIN MAP SHOWING PROPOSED BOUNDARIES OF ANNEXATION NO. 59 TO COMMUNITY FACILITIES DISTRICT NO. 5, CITY OF ROCKLIN, COUNTY OF PLACER, STATE OF CALIFORNIA, WAS APPROVED BY THE CITY COUNCIL OF THE CITY OF ROCKLIN, AT A REGULAR MEETING THEREOF, HELD ON THE \_\_\_\_ DAY OF \_\_\_\_\_, 2019, BY ITS RESOLUTION NO. \_\_\_\_\_.

\_\_\_\_\_  
MONA FORSTER  
CITY CLERK OF THE CITY OF ROCKLIN

**COUNTY RECORDER'S STATEMENT**

FILED THIS \_\_\_\_ DAY OF \_\_\_\_\_, 2019, AT THE HOUR OF \_\_\_\_ M., FILE NO. \_\_\_\_\_ IN BOOK \_\_\_\_\_ OF MAPS OF ASSESSMENT AND COMMUNITY FACILITIES DISTRICTS, AT PAGE \_\_\_\_\_, IN THE OFFICE OF THE COUNTY RECORDER OF THE COUNTY OF PLACER, STATE OF CALIFORNIA.

\_\_\_\_\_  
COUNTY RECORDER OF COUNTY OF PLACER      BY: \_\_\_\_\_  
DEPUTY

**NOTE**

REFERENCE IS HEREBY MADE TO THAT CERTAIN MAP ENTITLED "PROPOSED BOUNDARIES OF COMMUNITY FACILITIES DISTRICT NO. 5, CITY OF ROCKLIN, COUNTY OF PLACER, STATE OF CALIFORNIA," FILED THE 13TH DAY OF SEPTEMBER, 1996 AT THE HOUR OF 2:06 P.M. IN BOOK 3 OF MAPS OF THE ASSESSMENT AND COMMUNITY FACILITIES DISTRICT AT PAGE 4, IN THE OFFICE OF THE COUNTY RECORDER OF THE COUNTY OF PLACER, STATE OF CALIFORNIA, WHICH THIS ANNEXATION MAP AFFECTS.