

**ANNEXATION MAP NO. 70 OF
COMMUNITY FACILITIES DISTRICT NO. 1**

CITY OF ROCKLIN, COUNTY OF PLACER, STATE OF CALIFORNIA
NOVEMBER 2019
PARK DRIVE SELF STORAGE
(DR 2018-0013)

NOTES:

REFERENCE IS HEREBY MADE TO THAT CERTAIN MAP ENTITLED "PROPOSED BOUNDARIES OF COMMUNITY FACILITIES DISTRICT NO. 1, CITY OF ROCKLIN, COUNTY OF PLACER, STATE OF CALIFORNIA", FILED THE 3RD DAY OF APRIL, 1987, AT THE HOUR OF 9:12 A.M. IN BOOK 1 OF MAPS OF COMMUNITY FACILITIES DISTRICT, AT PAGE 2, IN THE OFFICE OF THE COUNTY RECORDER OF THE COUNTY OF PLACER, STATE OF CALIFORNIA, WHICH THIS ANNEXATION MAP AFFECTS.

CITY CLERK'S STATEMENT

FILED IN THE OFFICE OF THE CITY CLERK OF THE CITY OF ROCKLIN, COUNTY OF PLACER, STATE OF CALIFORNIA, THIS _____ DAY OF _____, 2019.

HOPE ITHURBURN
DEPUTY CITY CLERK OF THE CITY OF ROCKLIN

CITY COUNCIL'S STATEMENT

I HEREBY CERTIFY THAT THE WITHIN MAP SHOWING PROPOSED BOUNDARIES OF FUTURE ANNEXATION AREA OF COMMUNITY FACILITIES DISTRICT NO. 1, CITY OF ROCKLIN, COUNTY OF PLACER, STATE OF CALIFORNIA, WAS APPROVED BY THE CITY COUNCIL OF THE CITY OF ROCKLIN, AT A REGULAR MEETING THEREOF, HELD ON THE _____ DAY OF _____, 2019, BY ITS RESOLUTION NO. _____.

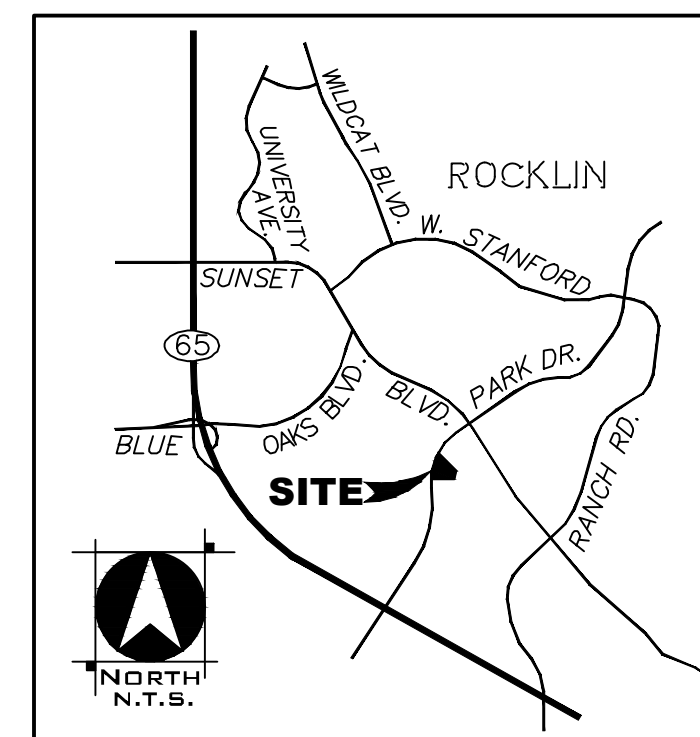
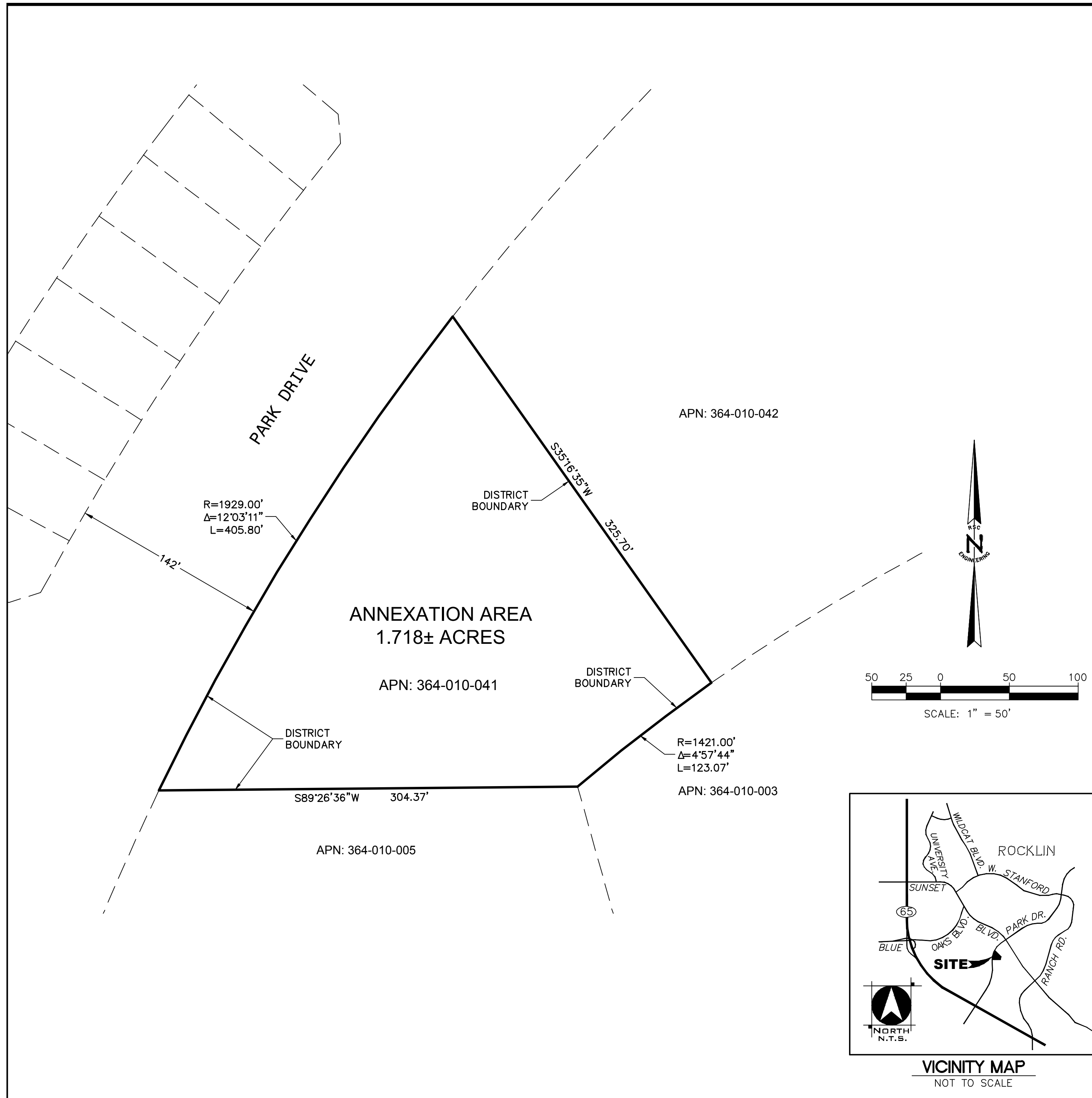
HOPE ITHURBURN
DEPUTY CITY CLERK OF THE CITY OF ROCKLIN

RECORDER'S STATEMENT

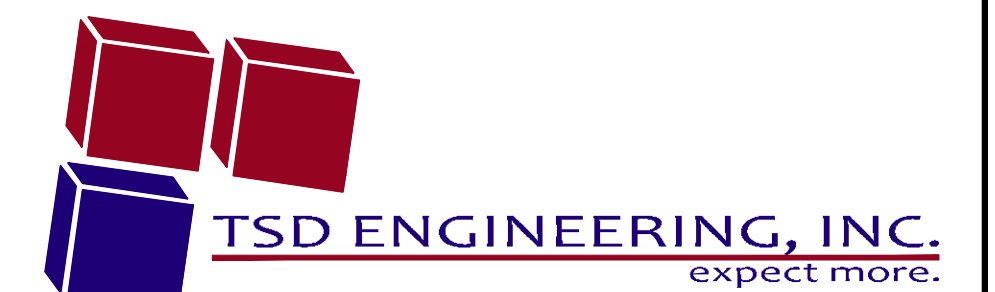
FILED THIS _____ DAY OF _____, 2019, AT THE HOUR OF _____ O'CLOCK _____ M. IN BOOK _____ OF MAPS OF ASSESSMENT AND COMMUNITY FACILITIES DISTRICTS, AT PAGE _____, IN THE OFFICE OF THE RECORDER OF THE COUNTY OF PLACER, STATE OF CALIFORNIA.

BY: _____ BY: _____
PLACER COUNTY RECORDER DEPUTY

FILE NO. _____ FEE: _____



VICINITY MAP
NOT TO SCALE



785 Orchard Drive, Suite #110
Folsom, CA 95630
Phone: (916) 608-0707
Fax: (916) 608-0701