

CITY COUNCIL'S STATEMENT:

I HEREBY CERTIFY THAT THE WITHIN MAP SHOWING PROPOSED BOUNDARIES OF ANNEXATION NO. 73 TO COMMUNITY FACILITIES DISTRICT NO. 1, CITY OF ROCKLIN, STATE OF CALIFORNIA, WAS APPROVED BY THE CITY COUNCIL OF THE CITY OF ROCKLIN AT A MEETING THEREOF, HELD ON THE \_\_\_\_\_ DAY OF \_\_\_\_\_, 2020, BY ITS RESOLUTION NO. \_\_\_\_\_.

HOPE THURBURN  
CITY CLERK OF THE CITY OF ROCKLIN

CITY CLERK'S STATEMENT:

FILED IN THE OFFICE OF THE CITY CLERK OF THE CITY OF ROCKLIN THIS \_\_\_\_\_ DAY OF \_\_\_\_\_, 2020.

HOPE THURBURN  
CITY CLERK OF THE CITY OF ROCKLIN

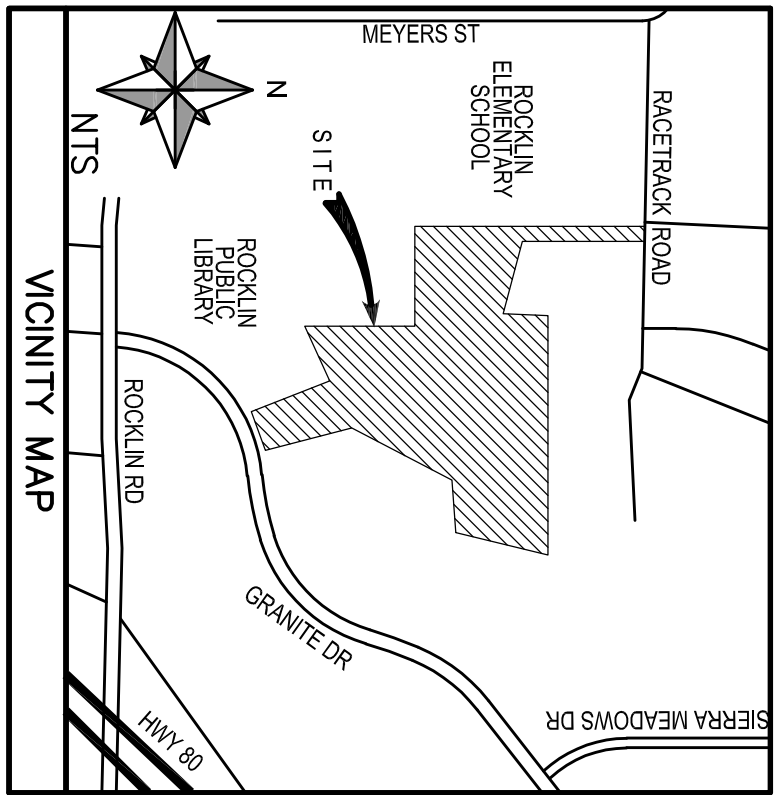
RECORDER'S STATEMENT:

FILED THIS \_\_\_\_\_ DAY OF \_\_\_\_\_, 2020, AT THE HOUR OF \_\_\_\_\_ M., IN BOOK \_\_\_\_\_ OF MAPS OF ASSESSMENT AND COMMUNITY FACILITIES DISTRICTS AT PAGE \_\_\_\_\_ IN THE OFFICE OF THE RECORDER IN THE COUNTY OF PLACER, STATE OF CALIFORNIA.

RYAN RONCO  
COUNTY RECORDER OF PLACER COUNTY

BY: \_\_\_\_\_  
DEPUTY

FILE NO. \_\_\_\_\_ FEE \_\_\_\_\_



NOTES:  
REFERENCE IS HEREBY MADE TO THAT CERTAIN MAP ENTITLED "PROPOSED BOUNDARIES OF COMMUNITY FACILITIES DISTRICT NO. 1, CITY OF ROCKLIN, COUNTY OF PLACER, STATE OF CALIFORNIA", FILED THE 3RD DAY OF APRIL 1987 AT THE HOUR OF 9:12 AM IN BOOK 1 OF MAPS OF ASSESSMENT AND COMMUNITY FACILITIES DISTRICT AT PAGE 2, IN THE OFFICE OF THE COUNTY RECORDER OF THE COUNTY OF PLACER, STATE OF CALIFORNIA, WHICH THIS ANNEXATION MAP AFFECTS.

GRANITE TERRACE  
(SD-2013-04)  
ANNEXATION MAP NO. 73  
COMMUNITY FACILITIES  
DISTRICT NO. 1  
A PORTION OF THE NORTHWEST  
ONE-QUARTER OF SECTION 20, T. 11 N.,  
R. 7 E., M.D.B. & M.  
CITY OF ROCKLIN, COUNTY OF PLACER, CALIFORNIA