

CITY COUNCIL'S STATEMENT:

I HEREBY CERTIFY THAT THE WITHIN MAP SHOWING PROPOSED BOUNDARIES OF ANNEXATION NO. 61 TO COMMUNITY FACILITIES DISTRICT NO. 5, CITY OF ROCKLIN, STATE OF CALIFORNIA, WAS APPROVED BY THE CITY COUNCIL OF THE CITY OF ROCKLIN AT A MEETING THEREOF, HELD ON THE _____ DAY OF _____, 2020, BY ITS RESOLUTION NO. _____.

HOPE THURBURN
CITY CLERK OF THE CITY OF ROCKLIN

CITY CLERK'S STATEMENT:

FILED IN THE OFFICE OF THE CITY CLERK OF THE CITY OF ROCKLIN THIS _____ DAY OF _____, 2020.

HOPE THURBURN
CITY CLERK OF THE CITY OF ROCKLIN

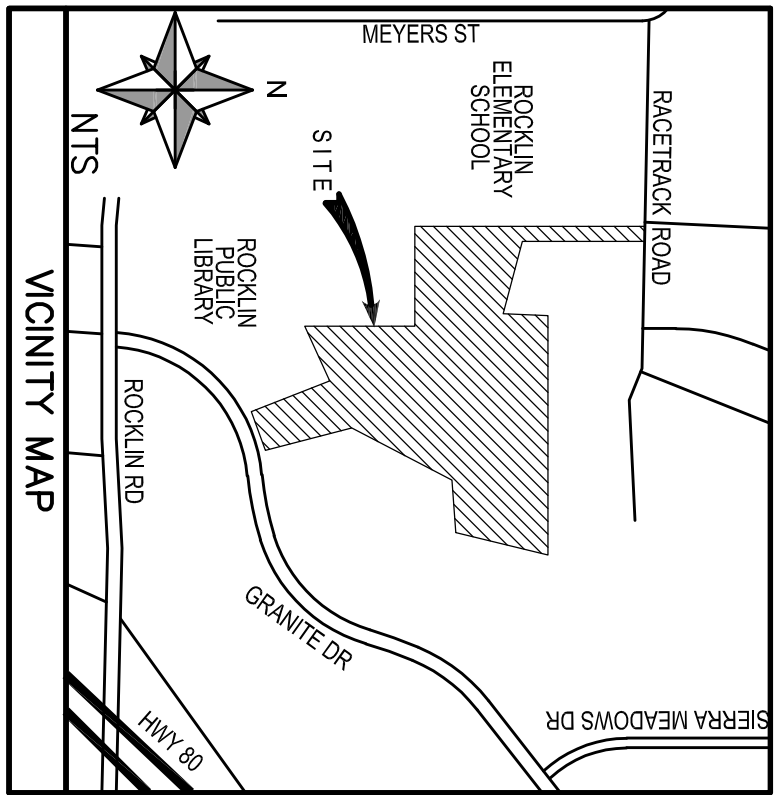
RECORDER'S STATEMENT:

FILED THIS _____ DAY OF _____, 2020, AT THE HOUR OF _____ M., IN BOOK _____ OF MAPS OF ASSESSMENT AND COMMUNITY FACILITIES DISTRICTS AT PAGE _____ IN THE OFFICE OF THE RECORDER IN THE COUNTY OF PLACER, STATE OF CALIFORNIA.

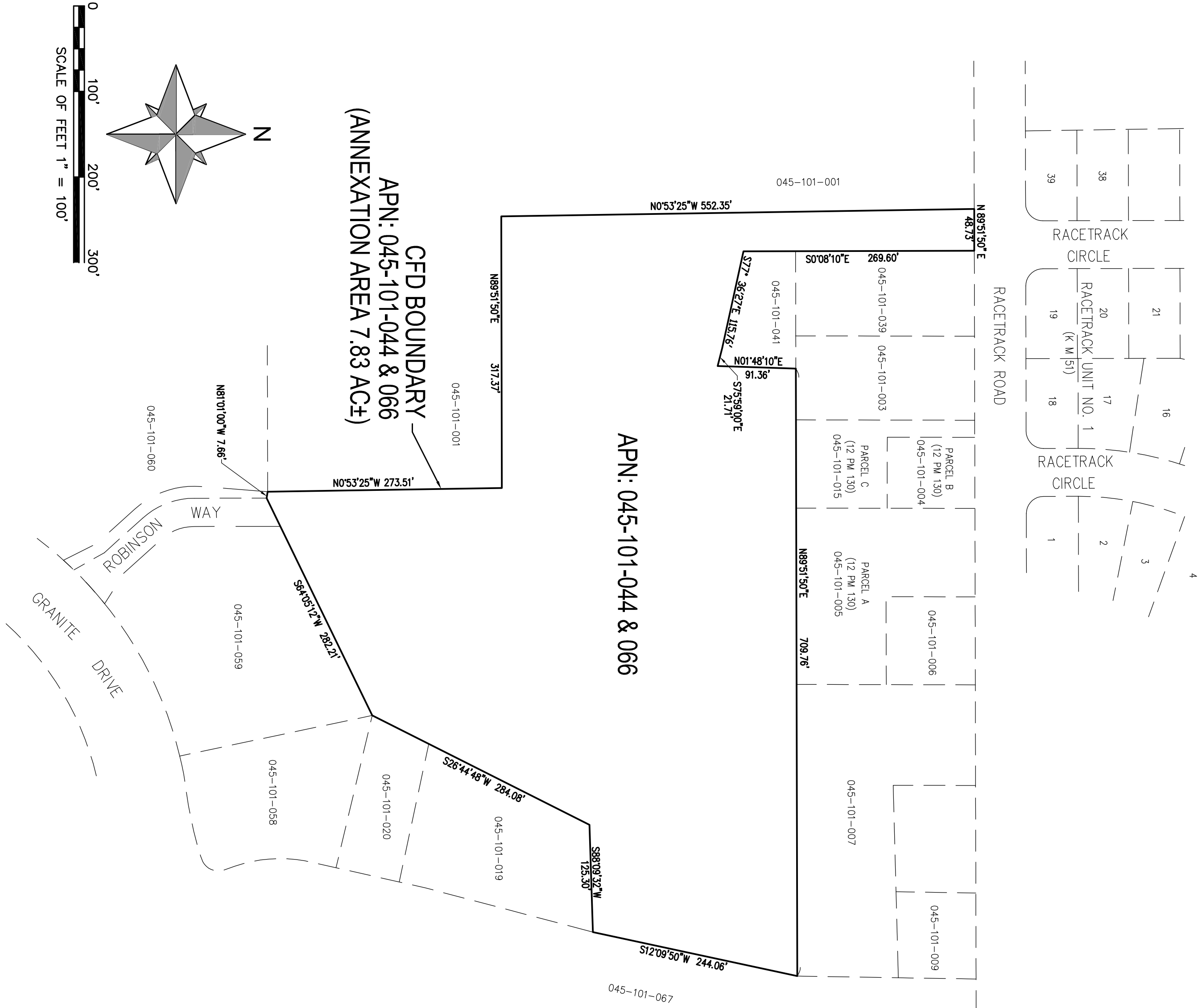
RYAN RONCO
COUNTY RECORDER OF PLACER COUNTY

BY: _____
DEPUTY

FILE NO. _____ FEE _____



NOTES:
THIS OFFICE IS HEREBY MADE TO THAT CERTAIN MAP ENTITLED "PROPOSED BOUNDARIES OF COMMUNITY FACILITIES DISTRICT NO. 5, CITY OF ROCKLIN, COUNTY OF PLACER, STATE OF CALIFORNIA," FILED THE 13TH DAY OF SEPTEMBER 1996 AT THE HOUR OF 2:06 PM IN BOOK 3 OF MAPS OF ASSESSMENT AND COMMUNITY FACILITIES DISTRICT AT PAGE 4, IN THE OFFICE OF THE COUNTY RECORDER OF THE COUNTY OF PLACER, STATE OF CALIFORNIA, WHICH THIS ANNEXATION MAP AFFECTS.



CFD BOUNDARY
APN: 045-101-044 & 066
(ANNEXATION AREA 7.83 AC±)



GRANITE TERRACE
(SD-2013-04)
ANNEXATION MAP NO. 61
COMMUNITY FACILITIES
DISTRICT NO. 5
A PORTION OF THE NORTHWEST
ONE-QUARTER OF SECTION 20, T. 11 N.,
R. 7 E., M.D.B. & M.
CITY OF ROCKLIN, COUNTY OF PLACER, CALIFORNIA