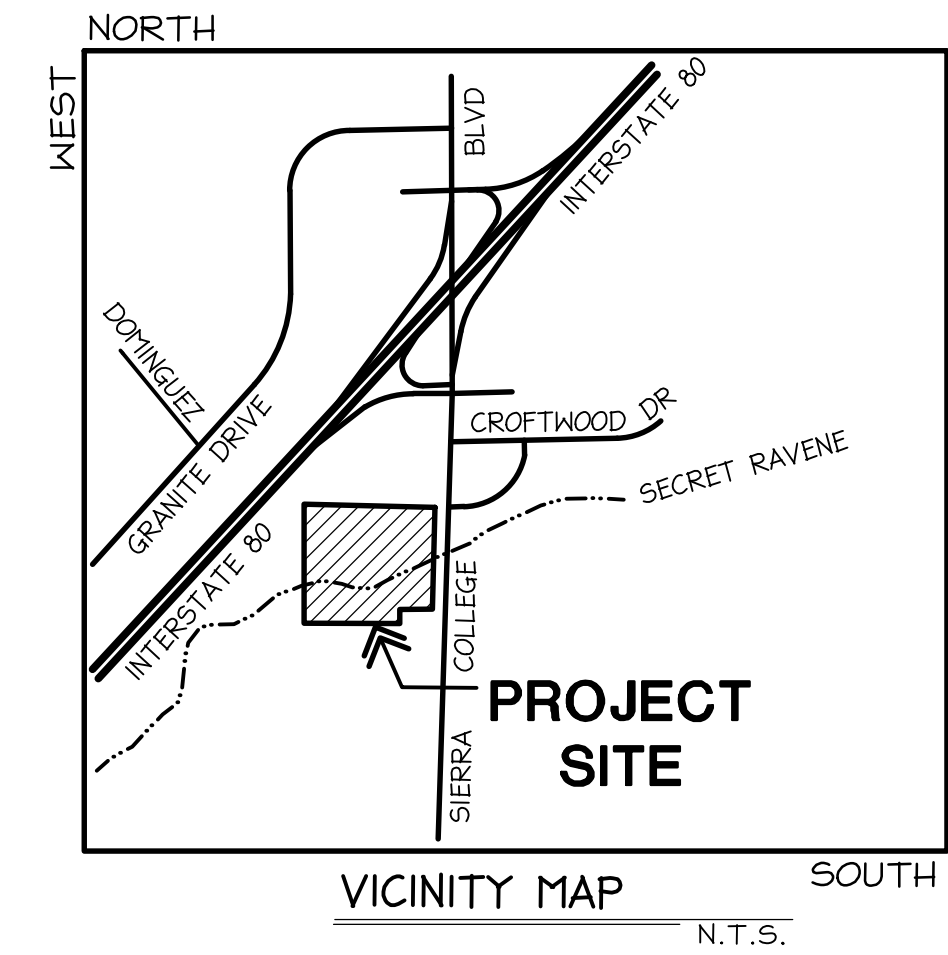


QUICK QUACK SIERRA COLLEGE (DL2019-0001)  
ANNEXATION MAP NO. 63  
COMMUNITY FACILITIES DISTRICT NO. 5

A PORTION OF THE SOUTHWEST QUARTER OF SECTION 16, TOWNSHIP 11 NORTH, RANGE 7 EAST, M.D.B.#11.  
CITY OF ROCKLIN, COUNTY OF PLACER, STATE OF CALIFORNIA

LINE DATA	
NO.	BEARING and LENGTH
L1	S89°03'19"W 20.91'
L2	S89°03'19"W 113.54'
L3	S87°29'50"W 104.61'
L4	N02°30'10"W 9.70'
L5	N01°55'52"E 85.48'
L6	N03°50'25"E 58.93'
L7	N03°50'25"E 91.16'
L8	N03°50'25"E 150.08'
L9	N01°55'52"E 60.65'
L10	N87°28'32"E 24.22'
L11	N87°28'32"E 44.51'
L12	N87°28'32"E 68.73'
L24	N04°21'59"E 28.20'

CURVE DATA				
NO.	RADIUS	LENGTH	DELTA	CHORD
C1	20.00'	32.96'	94°26'02"	N45°17'09"W 29.36'
C2	14,958.00'	9.61'	00°02'13"	N01°55'52"E 9.61'
C3	13.33'	15.47'	66°30'44"	N57°41'19"W 14.62'
C4	87.50'	68.29'	44°43'02"	N19°50'03"E 66.57'
C5	112.50'	74.27'	37°49'36"	N23°16'47"E 72.93'



CITY COUNCIL'S STATEMENT

I HEREBY CERTIFY THAT THE WITHIN MAP SHOWING PROPOSED BOUNDARIES OF ANNEXATION No. 63 TO COMMUNITY FACILITIES DISTRICT No. 5, CITY OF ROCKLIN, COUNTY OF PLACER, STATE OF CALIFORNIA, WAS APPROVED BY THE CITY COUNCIL OF THE CITY OF ROCKLIN, AT A REGULAR MEETING THEREOF, HELD ON THE \_\_\_\_ DAY OF \_\_\_\_\_, 20\_\_\_\_. BY ITS RESOLUTION No. \_\_\_\_\_.

\_\_\_\_\_  
HOPE ITHURBURN  
CITY CLERK OF THE CITY OF ROCKLIN

CITY CLERK'S STATEMENT

FILED IN THE OFFICE OF THE CITY CLERK, OF THE CITY OF ROCKLIN, COUNTY OF PLACER, STATE OF CALIFORNIA, THIS \_\_\_\_ DAY OF \_\_\_\_\_, 20\_\_\_\_.

\_\_\_\_\_  
HOPE ITHURBURN  
CITY CLERK OF THE CITY OF ROCKLIN

RECORDERS STATEMENT

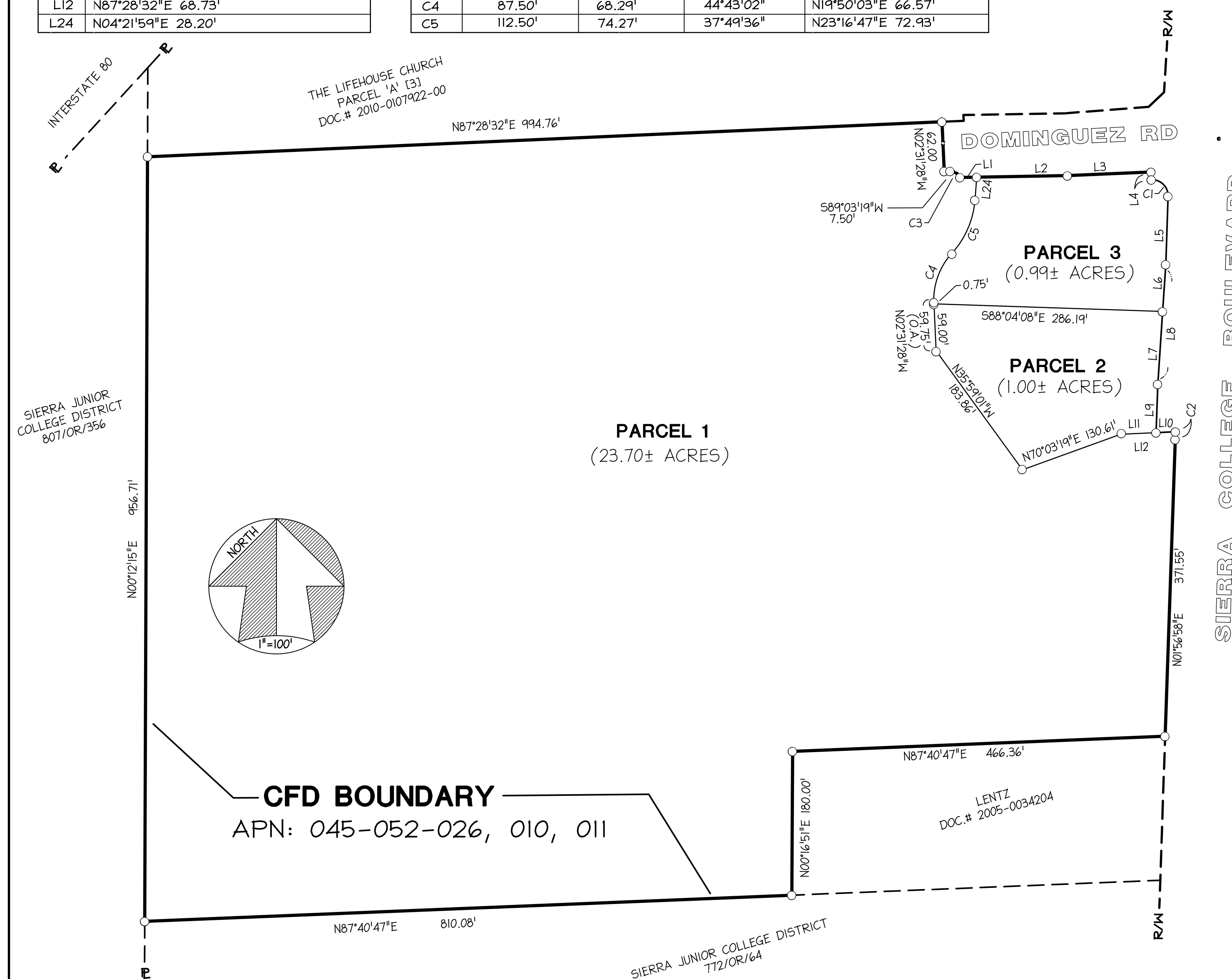
FILED THIS \_\_\_\_ DAY OF \_\_\_\_\_, 20\_\_\_\_, AT THE HOUR OF \_\_\_\_ O'CLOCK \_\_\_\_ M. FILE NO. \_\_\_\_ IN BOOK \_\_\_\_ OF MAPS OF COMMUNITY FACILITIES DISTRICT, AT PAGE \_\_\_\_ IN THE OFFICE OF THE COUNTY RECORDER OF THE COUNTY OF PLACER, STATE OF CALIFORNIA.

FILE NO. \_\_\_\_\_  
FEE \_\_\_\_\_ BY: RYAN RONCO  
PLACER COUNTY RECORDER

BY: \_\_\_\_\_  
DEPUTY

NOTES:

REFERENCE IS HEREBY MADE TO THAT CERTAIN MAP ENTITLED "PROPOSED BOUNDARIES OF COMMUNITY FACILITIES DISTRICT No. 5, CITY OF ROCKLIN, COUNTY OF PLACER, STATE OF CALIFORNIA," FILED THE 13rd DAY OF SEPTEMBER, 1996, AT THE HOUR OF 2:06 P.M. IN BOOK 3 OF MAPS OF ASSESSMENT AND COMMUNITY FACILITIES DISTRICT AT PAGE 4, IN THE OFFICE OF THE COUNTY RECORDER OF THE COUNTY OF PLACER, STATE OF CALIFORNIA, WHICH THIS ANNEXATION MAP AFFECTS.



**CFD BOUNDARY**  
APN: 045-052-026, 010, 011