



# Rocklin Bike Coalition

- Parents
- Rocklin Residents
- Business owners and civil servants
- Rocklin natives and transplants
- We all enjoy riding bikes
- Appreciate and desire to give back to our community
- 501(c)(3)



# Rocklin Bike Coalition

- ▶ Mission Statement:

- ▶ The mission of the Rocklin Bike Coalition is to advocate for the safe use of bicycles as a healthy and enjoyable form of outdoor recreation. We will accomplish this through the development of family friendly riding areas that are designed to be to be enjoyed by riders of all ages and skill levels.

- ▶ Vision Statement:

- ▶ The Rocklin Bike Coalition aims to build and maintain free to use, inclusive, recreational amenities that will benefit the current and future families of and visitors to the community of Rocklin, CA.

# What is a Pump Track?



**Berm**

**Roller**



# PUMPING

"PUMPING" is the essential skill for making your bike travel through the entire course without pedaling. Pumping is the act of shifting your body weight and absorbing forces to increase your momentum.

1 Drive into the base of the roller by weighting your pedals.



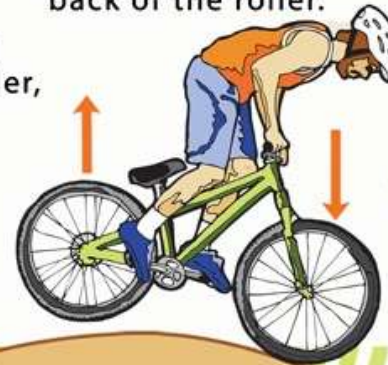
2 Unweight your front wheel as you ride up the face of the roller.



3 As you cross over the top of the roller, unweight your entire bike.



4 Then quickly weight your bike and push down as you ride down the back of the roller.



5 Put the front tire on the ground.



ROLLER



[kidsinparks.com](http://kidsinparks.com)

SCAN QR CODE  
TO WATCH VIDEO

COMING  
SOON

# Survey

- ▶ Facebook page 650 followers to more than 2000 since the February Parks Commission meeting
- ▶ Over 2200 respondents to our survey
  - ▶ 48% Rocklin residents
  - ▶ 52% non-Rocklin residents

# Survey Results

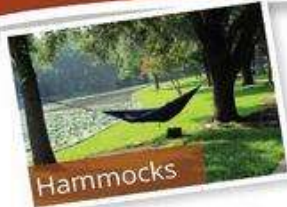
- ▶ Do you support the building of multi-use trails, bike park, and pump track in Rocklin?
  - ▶ 99.8% - Yes
  - ▶ 0.2% - No
  
- ▶ Do you feel that a network of mountain bike trails and a bike park would be an asset to Rocklin?
  - ▶ 99.8% - Yes
  - ▶ 0.2% - No

# Why should Rocklin have a pump track?

- ▶ Inline with Rocklin Master Plans
  - ▶ Parks and Trails Master Plan
    - ▶ Calls for continuing to monitor and evaluate for new neighborhood, community and special use park facilities
  - ▶ Trails Strategy and Action Plan
    - ▶ States its goal is to, “develop a network of diverse, quality trail experiences”
    - ▶ Plan also recognizes the **growing trend in unstructured recreation** and the ability of well-planned trails to protect natural areas from degradation
    - ▶ Recognizes the significant health and social benefits to be achieved through regular physical activity
- ▶ 2018 Blue Memo, to the Parks, Recreation and Arts Commission, May 8, 2018
  - ▶ Rocklin has 200 acres of undeveloped park land and designated open space sitting next to existing park sites
  - ▶ Rocklin parks already feature traditional sports fields and playgrounds, and that the undeveloped space provides an opportunity for **unique amenities which attract people of all ages**



# Creative Park Amenities



Hammocks



Game Tables



DOG PARK



Dog Obstacle Course



Art Installations



Outdoor Gym



Climbing Walls



Labyrinths



## Imagine Whitney Park

PHASE II

Skate Parks



Mtn & BMX Bikes



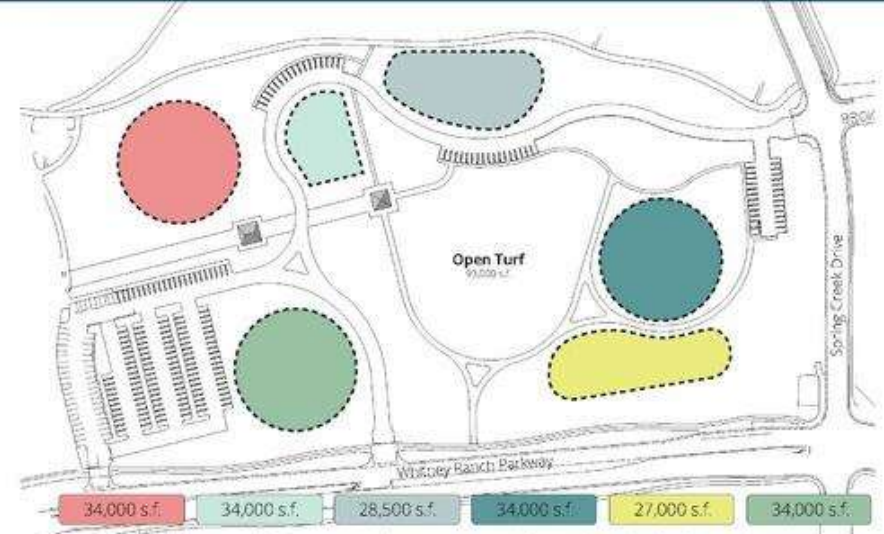
Climb & Slide



Creative Play



Climbable Sculpture



\*This map is for example purposes only – the design is up to you!

## Imagine the Next Phase of Whitney Park

The City of Rocklin is seeking the community's input in creating the master plan for the second phase of Whitney Park. A blank canvas of twenty acres of undeveloped parkland sits next to the current Whitney Park and is ripe for the imagination of Rocklin residents.

### Sections could include:

- Dog Park
- Interactive Art Play Areas
- BMX Course
- Climbing Walls
- Game Tables (chess, table tennis...)
- Other Unique Features

With Whitney Park already featuring traditional sports fields and playgrounds, the undeveloped space provides the opportunity for unique amenities to attract people of all ages. Imagine a park with different sections tied together by walkways, open space, and gathering areas.

A survey at [www.rocklin.ca.us/parksurvey](http://www.rocklin.ca.us/parksurvey) will be used by City and community decision-makers to prioritize park features. The feedback and eventual master plan will set a framework for the project and help to identify funding needs.

For more information and to take the survey, visit:  
[www.rocklin.ca.us/parksurvey](http://www.rocklin.ca.us/parksurvey)





# Why should Rocklin have a pump track?

- Option for kids not involved in organized sports
  - Average child quits organized sports by age 11 (Aspen Inst. 2019)
  - Bicycling among lowest cost sports (Aspen Inst. 2019)
  - Less than one-half of boys and less than one-third of girls meet the 60 minutes of daily physical exercise recommended by the CDC (CA Dept of Education)
- Great for families
  - Play together



# Why should Rocklin have a pump track?

- Benefits community
  - Adds diversity to existing park amenities
  - Free to use park amenity
  - Accessible by all ages and skill levels
  - Utilized for Parks and Rec programming
  - Tourists supporting Rocklin businesses
  - Possible revenue source
    - Pump track races





# Park Infrastructure Costs

## Whitney Community Playground

- ▶ One Million dollar replacement cost
- ▶ Estimated lifespan 15-20 years



## Johnson Springview Splash Pad

- ▶ Cost to build \$ 800,000
- ▶ Annual Maintenance \$5000





# All Weather Paved Pump track

long term, maintenance free, all inclusive





# Paved Pump track

- Built to last
- 15+ year lifespan
- Unique designs, no cookie cutter
- Designs that accommodate beginner and experienced riders
- Inclusive
- Virtually maintenance free



# Infrastructure of a pump track

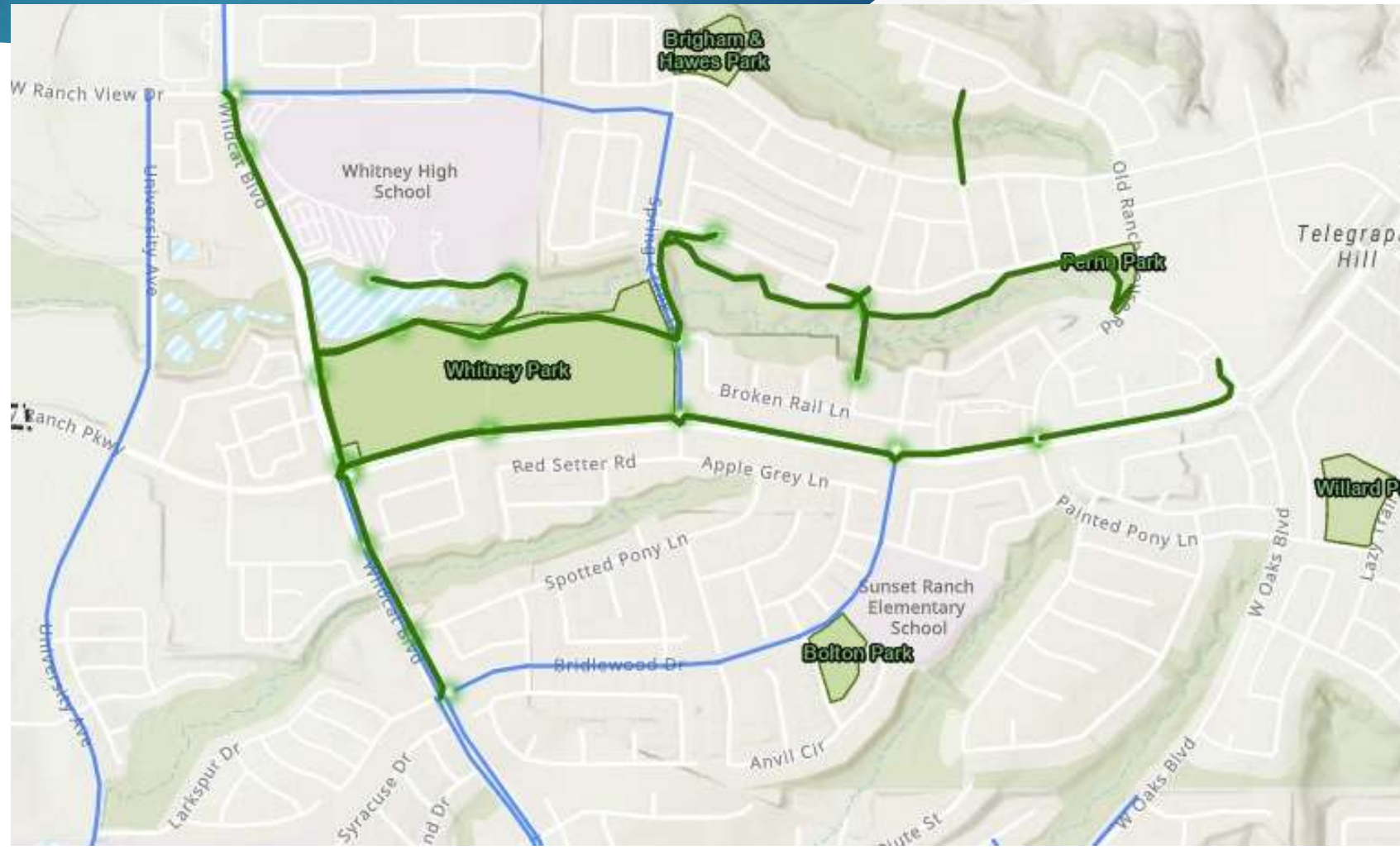
- ▶ 1 - 2 acres of land
- ▶ Level surface
- ▶ Emergency access
- ▶ Parking / neighborhood access
- ▶ Viewing area
- ▶ Tables / Benches
- ▶ Shade Area / Pavillions
- ▶ Restrooms
- ▶ Signage
  - ▶ Rules of the park





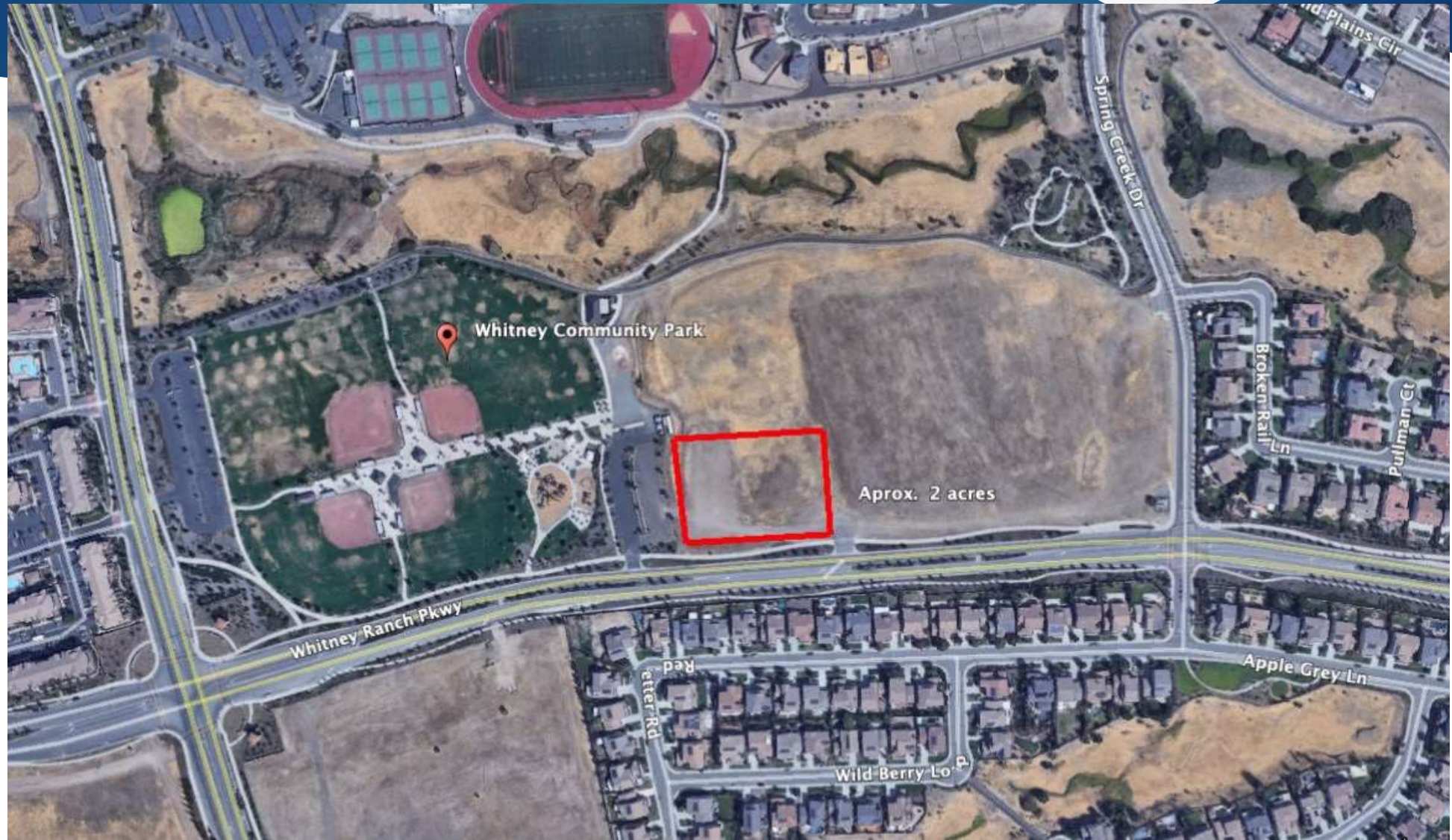
# Whitney Community Park

- ▶ Class 1 bike trails (green)
  - ▶ Park access without riding on roadways
- ▶ Class 2 bike lanes (blue)





# Whitney Community Park





# Paved Pump track

10,000 – 20,000 Square foot track  
- \$500,000 - \$700,000



# Other Costs

- ▶ Shade Structure / Pavilion \$50,000 - \$120,000
  - ▶ 2 – 3 Structures / Soft vs Hard
- ▶ Tables and Benches \$20,000
  - ▶ 6 Tables and 6 Benches
- ▶ Drinking Fountain Unk
- ▶ Bike Racks / Tool Station Unk
  
- ▶ Optional items \$100,000
  - ▶ Kids / Strider track
  - ▶ Bicycle Playground

# Initial Cost – \$9000

## - Planning and design

- ▶ Community Engagement Meeting
  - ▶ Professional builder will host a live meeting with your local riders (Rocklin Bike Coalition) and project team to formulate ideas for your concept design
  - ▶ Review of samples designs with group to identify a preferred theme
  - ▶ Summarize meeting findings with group
- ▶ Site Review
  - ▶ Review location of asphalt pump track for opportunities and constraints
  - ▶ Discuss potential locations for entry, spectator viewing and drainage flow
- ▶ Design Revisions
  - ▶ Revise conceptual design based on feedback from initial input (2-revisions included)
  - ▶ Verify the design is responsive to the site and budget
- ▶ Cost Estimate
  - ▶ Provide cost estimate for construction of approved asphalt pump track design
- ▶ Deliverables
  - ▶ Large poster size print of final design



# Build Process

## 6 – 11 Weeks of construction

- 1-2 Weeks Site Preparation
  - Leveling
  - Drainage Installation
- 3-5 Weeks Raw Shape
  - Shaping the course
- 1-2 Weeks Asphaltting
  - Asphalt pavement
  - Marking the course
- 1-2 Weeks Landscaping
  - Greening Planting
  - Shade Structures
  - Benches / Tables



# Possible revenue

- ▶ Recreation Department Programming
  - ▶ Summer programs for kids
- ▶ Rent pavilions for parties
- ▶ Events
  - ▶ Trade fairs
  - ▶ Pump track races





# For the Community



# Proposal

- ▶ For the Rocklin city council to direct staff to work with Rocklin Bike Coalition to make an all weather paved pump track a reality.



# Additional resources

- ▶ Getting started with Velosolutions: <https://www.youtube.com/watch?v=hVFxEM5nHh8>
- ▶ Asphalt Pump Tracks Official Guide: <https://velosolutions.com/wp-content/uploads/2020/11/Velosolutions-Pump-Tracks-English.pdf>
- ▶ Velosolutions: <https://www.youtube.com/watch?v=uVmurW7F4J8>
- ▶ Velosolutions USA: **American Ramp Company** Josh Willis – VP West Coast 817.726.7778 c [josh@americanrampcompany.com](mailto:josh@americanrampcompany.com)