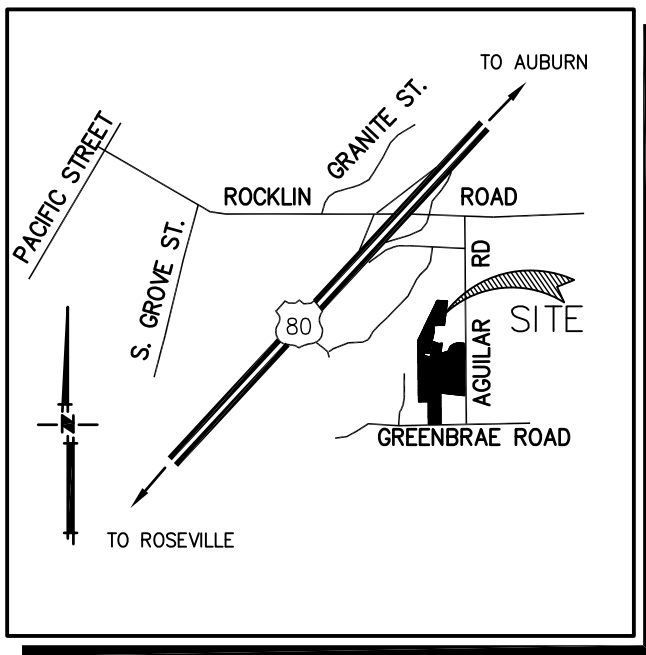


ROCKLIN MEADOWS
(SD-2013-08)

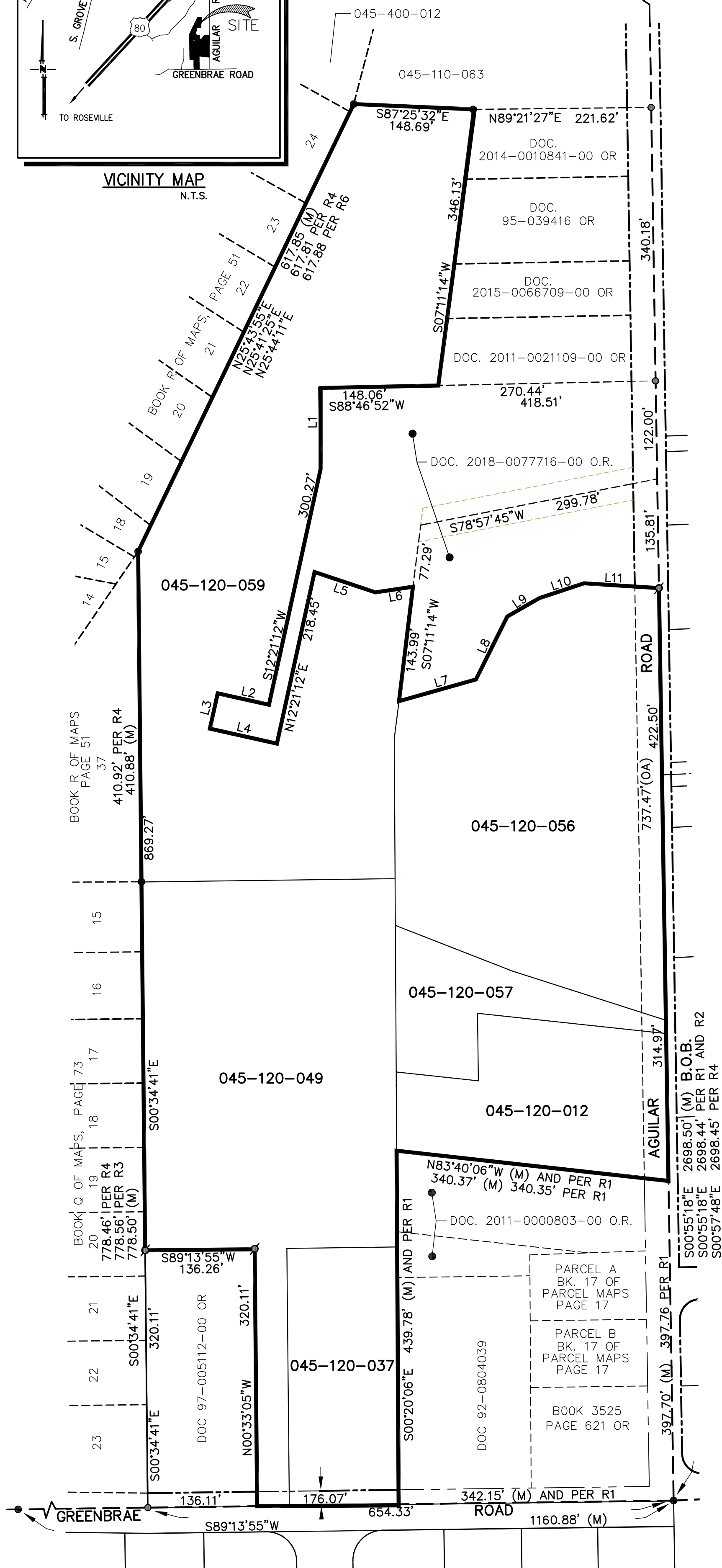
**ANNEXATION MAP NO. 69 OF
COMMUNITY FACILITIES DISTRICT NO. 5**

A PORTION OF THE SOUTHWEST QUARTER OF SECTION 20,
TOWNSHIP 11 NORTH, RANGE 7 EAST,
MOUNT DIABLO BASE AND MERIDAN,
CITY OF ROCKLIN, COUNTY OF PLACER, STATE OF CALIFORNIA

OCTOBER 2021



VICINITY MAP
N.T.S.



NOTES:

REFERENCE IS HEREBY MADE TO THAT CERTAIN MAP ENTITLED "PROPOSED BOUNDARIES OF COMMUNITY FACILITIES DISTRICT NO. 5, CITY OF ROCKLIN, COUNTY OF PLACER, STATE OF CALIFORNIA", FILED THE 13TH DAY OF SEPTEMBER, 1996, AT THE HOUR OF 2:06 P.M., IN BOOK 3 OF MAPS OF ASSESSMENT AND COMMUNITY FACILITIES DISTRICT AT PAGE 4, IN THE OFFICE OF THE COUNTY RECORDER OF THE COUNTY OF PLACER, STATE OF CALIFORNIA, WHICH THIS ANNEXATION MAP AFFECTS.

CITY CLERK'S STATEMENT:

FILED IN THE OFFICE OF THE CITY CLERK OF THE CITY OF ROCKLIN THIS _____ DAY OF _____, 2021.

HOPE ITHURBURN
CITY CLERK OF THE CITY OF ROCKLIN

CITY COUNCIL'S STATEMENT:

I HEREBY CERTIFY THAT THE WITHIN MAP SHOWING PROPOSED BOUNDARIES OF ANNEXATION NO. 69 TO COMMUNITY FACILITIES DISTRICT NO. 5, CITY OF ROCKLIN, COUNTY OF PLACER, STATE OF CALIFORNIA, WAS APPROVED BY THE CITY COUNCIL OF THE CITY OF ROCKLIN, AT A MEETING THEREOF, HELD ON THE _____ DAY OF _____, 2021, BY ITS RESOLUTION NO. _____.

HOPE ITHURBURN
CITY CLERK OF THE CITY OF ROCKLIN

RECORDER'S STATEMENT:

FILED THIS _____ DAY OF _____, 2021, AT THE HOUR OF _____ M., IN BOOK _____ OF MAPS OF ASSESSMENT AND COMMUNITY FACILITIES DISTRICTS, AT PAGE _____ IN THE OFFICE OF THE COUNTY RECORDER IN THE COUNTY OF PLACER, STATE OF CALIFORNIA.

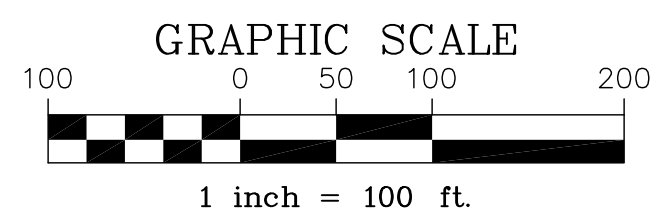
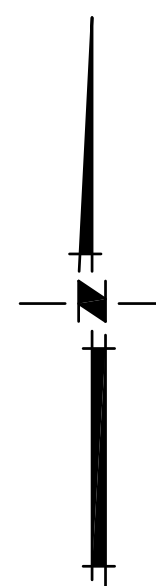
RYAN RONCO
PLACER COUNTY RECORDER

BY: _____
DEPUTY

FILE NO. _____ FEE: _____

LINE TABLE

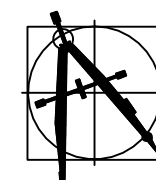
LINE NUMBER	LINE BEARING	LINE LENGTH
L1	S00°55'18"E	100.65'
L2	N77°28'33"W	66.24'
L3	S11°24'59"W	45.01'
L4	S77°28'33"E	85.51'
L5	S71°33'59"E	79.97'
L6	N81°27'51"E	47.11'
L7	N74°02'29"E	100.30'
L8	S26°27'29"W	87.38'
L9	S60°07'29"W	45.86'
L10	S71°36'29"W	58.61'
L11	S86°19'31"E	93.55'
L12	S89°13'55"W	35.25'



LEGEND

- ANNEXATION NO. 69 BOUNDARY
- 045-120-049** ASSESSORS PARCEL NUMBER
- ASSESSORS PARCEL LINE

ADDITIONAL ACRES OF AREA WITHIN CFD DISTRICT
14.99 ACRES MORE OR LESS



CLAYBAR ENGINEERING INC.
9354 ELK GROVE-FLORIN ROAD
ELK GROVE, CA 95624
Ph.: 916-684-7301
Fax: 916-684-2627