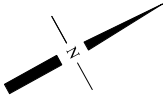
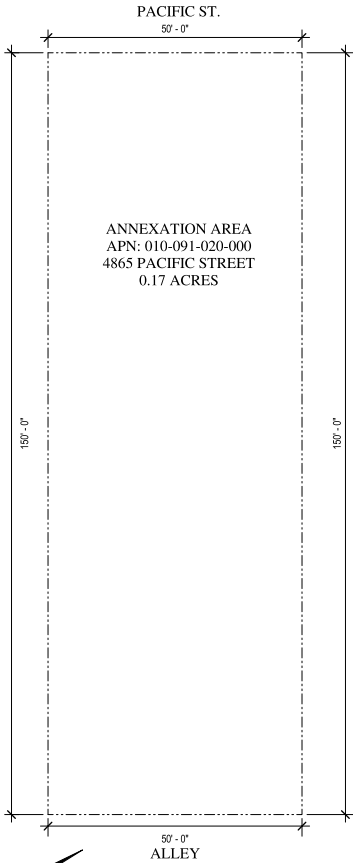
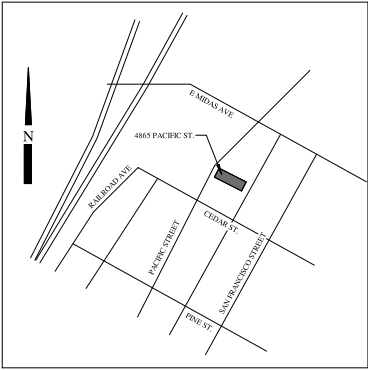


VICINITY MAP



ASSESSMENT DIAGRAM

**COOL POOLS (BZ-2020-001)  
ANNEXATION MAP NO. 65  
COMMUNITY FACILITIES DISTRICT NO. 5**

LOT 6, IN BLOCK G, ACCORDING TO "MAP OF THE TOWN OF ROCKLIN PLACER COUNTY CALIFORNIA, NE 1/4 SEC. 19 T11N. R. 7E." RECORDED AUGUST 9, 1893 IN BOOK "A" OF MAPS, AT PAGE 28. EXCEPTING THEREFROM THAT PORTION GRANTED TO THE CITY OF ROCKLIN, A MUNICIPAL CORPORATION BY GRANT DEED RECORDED JUNE 6, 1991, AS INSTRUMENT NO. 91-32384, OFFICIAL RECORDS

**NOTES:**

REFERENCE IS HEREBY MADE TO THAT CERTAIN MAP ENTITLED "PROPOSED BOUNDARIES OF COMMUNITY FACILITIES DISTRICT NO. 5, CITY OF ROCKLIN, COUNTY OF PLACER, STATE OF CALIFORNIA," FILED THE 13th DAY OF SEPTEMBER, 1996, AT THE HOUR OF 2:06 P.M. IN BOOK 3 OF MAPS OF ASSESSMENT AND COMMUNITY FACILITIES DISTRICT AT PAGE 4, IN THE OFFICE OF THE COUNTY RECORDER OF THE COUNTY OF PLACER, STATE OF CALIFORNIA, WHICH THIS ANNEXATION MAP AFFECTS.

**CITY CLERK'S STATEMENT:**

FILED IN THE OFFICE OF THE CITY CLERK OF THE CITY OF ROCKLIN THIS \_\_\_\_ DAY OF \_\_\_\_\_, 2021.

BY: \_\_\_\_\_ DATE: \_\_\_\_\_

HOPE ITHURBURN  
CITY CLERK OF THE CITY OF ROCKLIN

**CITY COUNCIL'S STATEMENT:**

I HEREBY CERTIFY THAT THE WITHIN MAP SHOWING PROPOSED BOUNDARIES OF ANNEXATION NO. 65 TO COMMUNITY FACILITIES DISTRICT NO. 5 CITY OF ROCKLIN, COUNTY OF PLACER, STATE OF CALIFORNIA, WAS APPROVED BY THE CITY COUNCIL OF THE CITY OF ROCKLIN, AT THE MEETING THEREOF, HELD ON THE \_\_\_\_ DAY OF \_\_\_\_\_, 2021, BY ITS RESOLUTION NO. \_\_\_\_\_.

BY: \_\_\_\_\_ DATE: \_\_\_\_\_

HOPE ITHURBURN  
CITY CLERK OF THE CITY OF ROCKLIN

**RECORDER'S STATEMENT:**

FILED THIS \_\_\_\_ DAY OF \_\_\_\_\_, 2021 AT THE HOUR OF \_\_\_\_ O'CLOCK \_\_\_\_ M. IN THE BOOK \_\_\_\_ OF MAPS OF ASSESSMENT AND COMMUNITY FACILITIES DISTRICTS, AT PAGE \_\_\_\_ IN THE OFFICE OF THE COUNTY RECORDER IN THE COUNTY OF PLACER, STATE OF CALIFORNIA.

BY: \_\_\_\_\_

RYAN RONCO  
PLACER COUNTY RECORDER

BY: \_\_\_\_\_

DEPUTY

FILE NO. \_\_\_\_\_

FEE: \_\_\_\_\_