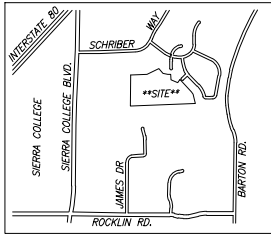


NOTES:

REFERENCE IS HEREBY MADE TO THAT CERTAIN MAP ENTITLED "PROPOSED BOUNDARIES OF COMMUNITY FACILITIES DISTRICT NO. 1, CITY OF ROCKLIN, COUNTY OF PLACER, STATE OF CALIFORNIA", FILED THE 3RD DAY OF APRIL 1987 AT THE HOUR OF 9:12 AM IN BOOK 1 OF MAPS OF ASSESSMENT AND COMMUNITY FACILITIES DISTRICT, AT PAGE 2, IN THE OFFICE OF THE COUNTY RECORDER OF THE COUNTY OF PLACER, STATE OF CALIFORNIA, WHICH THIS ANNEXATION MAP AFFECTS.

VICINITY MAP



**CROWNE POINT PHASE I UNIT NO.4
(CROFTWOOD SD-88-05)
ANNEXATION MAP NO. 83 OF
COMMUNITY FACILITIES DISTRICT NO. 1**

LOT 'A' OF "CROWNE POINT PHASE I UNIT 3B"
FILED FOR RECORD IN BOOK DD OF MAPS, AT PAGE 80
BEING A PORTION OF SECTION 16, T.11N., R.7E. M.D.M.
CITY OF ROCKLIN, COUNTY OF PLACER, STATE OF CALIFORNIA
JANUARY 2022

CITY COUNCIL'S STATEMENT:

I HEREBY CERTIFY THAT THE WITHIN MAP SHOWING PROPOSED BOUNDARIES OF ANNEXATION NO. 83 TO COMMUNITY FACILITIES DISTRICT NO. 1, CITY OF ROCKLIN, COUNTY OF PLACER, STATE OF CALIFORNIA, WAS APPROVED BY THE CITY COUNCIL OF THE CITY OF ROCKLIN AT A MEETING THEREOF, HELD ON THE _____ DAY OF _____, 2022, BY ITS RESOLUTION NO. _____

HOPE THURBURN _____ DATE _____
CITY CLERK OF THE CITY OF ROCKLIN

CITY CLERK'S STATEMENT:

FILED IN THE OFFICE OF THE CITY CLERK OF THE CITY OF ROCKLIN THIS _____ DAY OF _____, 2022.

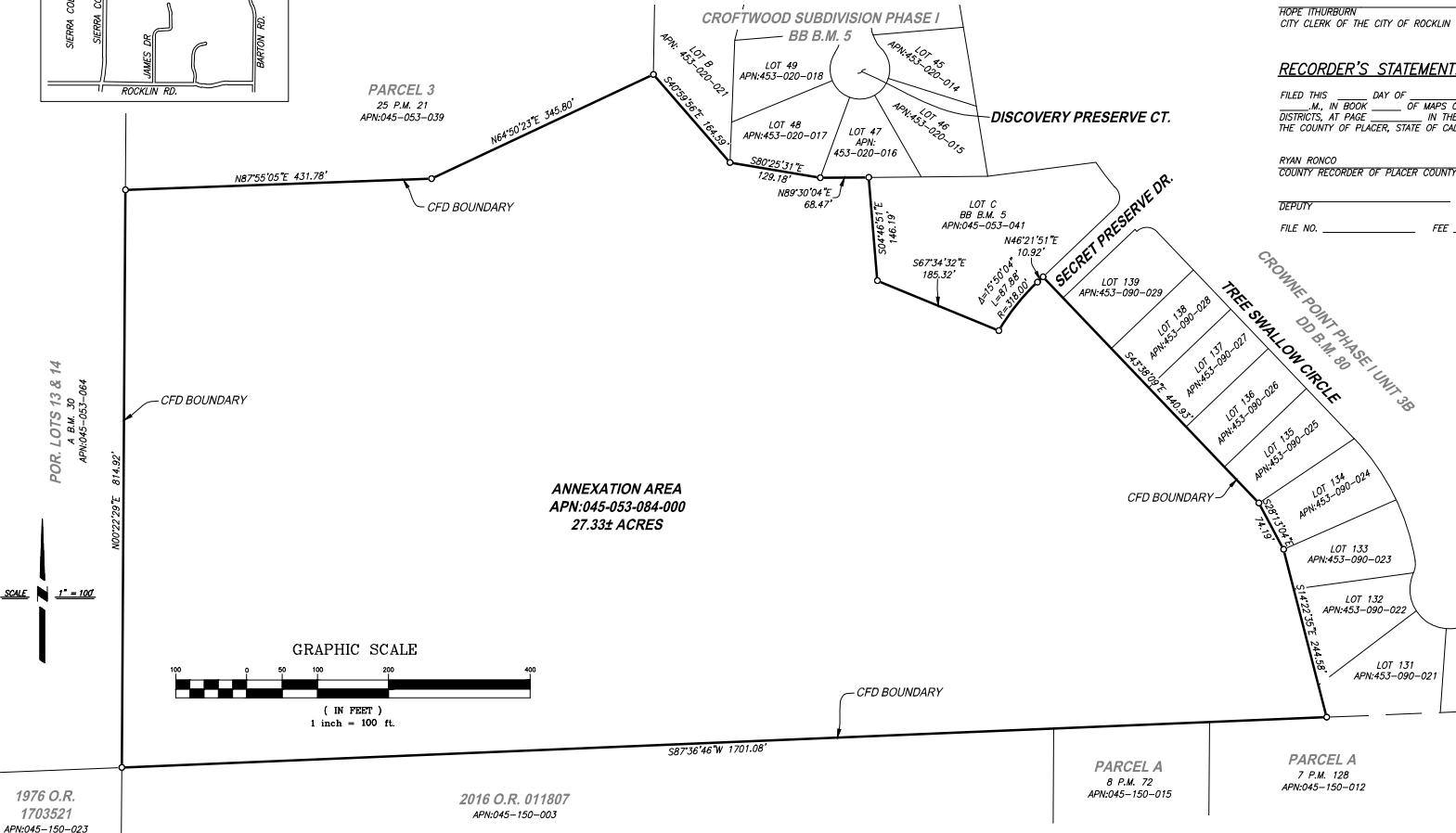
HOPE THURBURN _____ DATE _____
CITY CLERK OF THE CITY OF ROCKLIN

RECORDER'S STATEMENT:

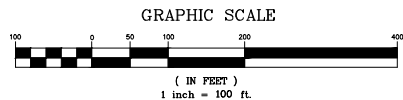
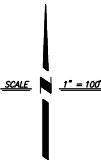
FILED THIS _____ DAY OF _____, 2022, AT THE HOUR OF _____ M., IN BOOK _____ OF MAPS OF ASSESSMENT AND COMMUNITY FACILITIES DISTRICTS, AT PAGE _____ IN THE OFFICE OF THE COUNTY RECORDER IN THE COUNTY OF PLACER, STATE OF CALIFORNIA.

RYAN RONCO
COUNTY RECORDER OF PLACER COUNTY

DEPUTY _____
FILE NO. _____ FEE _____



POR. LOTS 13 & 14
A B.M. 30
APN:045-053-064



1976 O.R.
1703521
APN:045-150-023

2016 O.R. 011807
APN:045-150-003

PARCEL A
8 P.M. 72
APN:045-150-015

PARCEL A
7 P.M. 128
APN:045-150-012