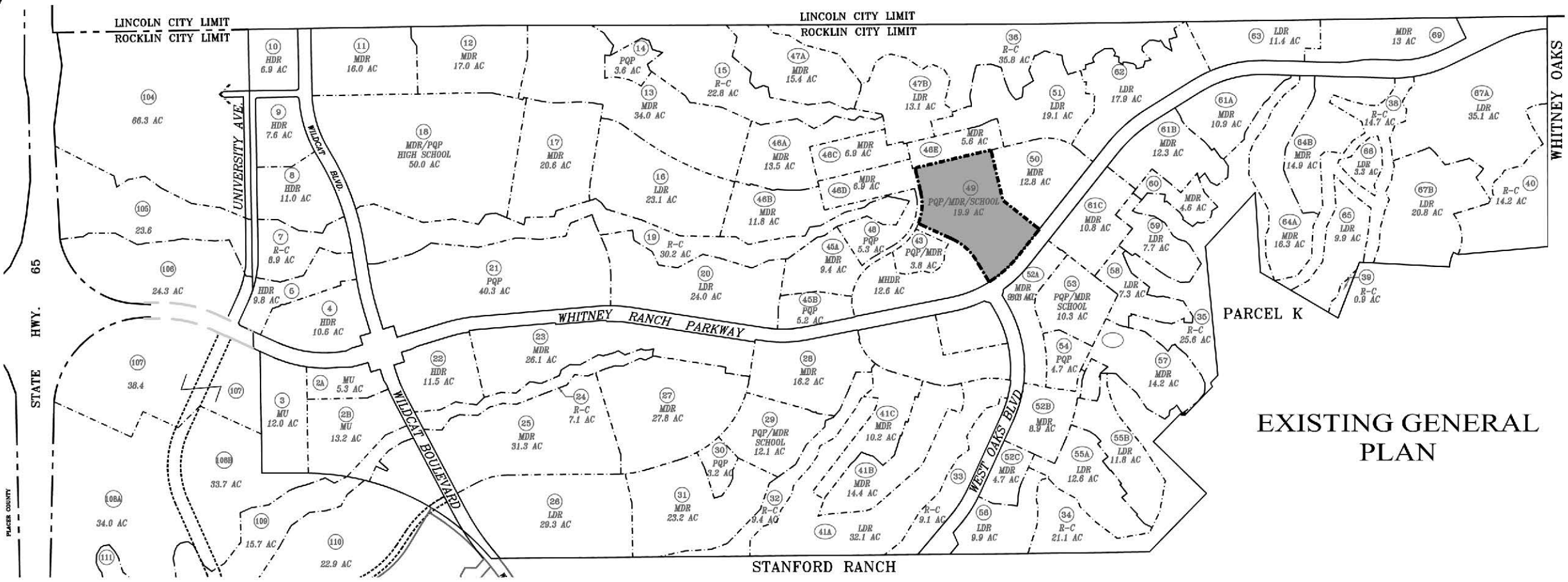


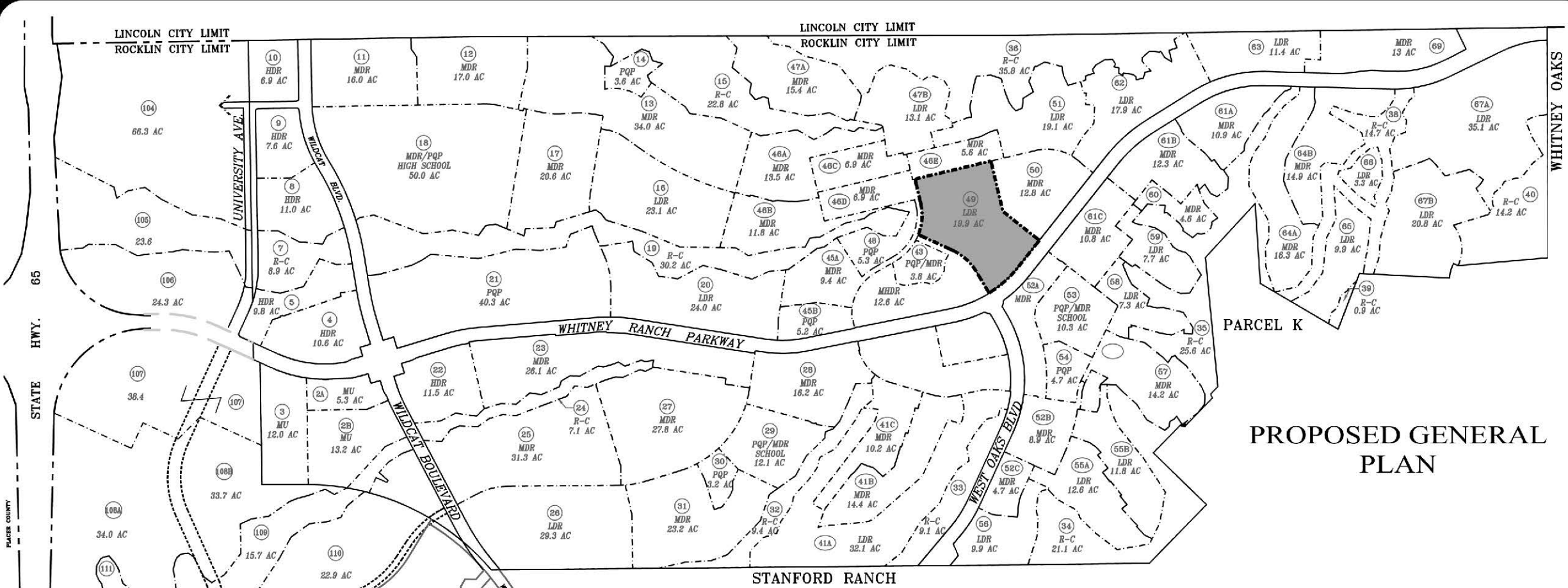
N.W.R.A.  
**GENERAL PLAN  
 EXHIBIT**  
 JUNE 2022

**EXHIBIT A**  
**GPA2021-0004**

Recommended for Approval by the Planning  
 Commission on September 20, 2022 *David Mollenbrok*



**EXISTING GENERAL  
 PLAN**



**PROPOSED GENERAL  
 PLAN**

**LEGEND:**

BP	BUSINESS PROFESSIONAL
LI	LIGHT INDUSTRIAL
HDR	HIGH DENSITY RESIDENTIAL
LDR	LOW DENSITY RESIDENTIAL
MDR	MEDIUM DENSITY RESIDENTIAL
MHDR	MEDIUM HIGH DENSITY RESIDENTIAL
PQP	PUBLIC QUASI PUBLIC
RC	RETAIL COMMERCIAL
R-C	RECREATIONAL CONSERVATION
—	CORE ROADS
XX	DEVELOPMENT AREA

**UBORA** ENGINEERING & PLANNING  
 "EXCELLENCE"  
 2901 DOUGLAS BOULEVARD, SUITE 285  
 ROSEVILLE, CA 95661 (916) 780-2500